



Music City Star East Corridor Commuter Rail Monthly Construction Update – April 2006

Highlights / Accomplishments

- Grade Crossing signals in both phases and CTC signal installation continues
- Final surfacing was started
- Martha Station construction started
- Mt. Juliet Station was paved and striped
- Parking lot lights were installed at Hermitage Station
- The landscaping and lighting was installed at the Donelson Station
- The track was installed at Riverfront Station
- Construction of the Lebanon Layover Facility continued

Critical Issues

- Grade Crossings at Quarry Rd. and SR 109 need work since the SR 109 project is later than anticipated

Construction Safety

- Roadway worker safety training continued to be given to the Contractor's Personnel
- Regular construction meetings were held with all the Contractors
- There were no lost time injuries on the site this month

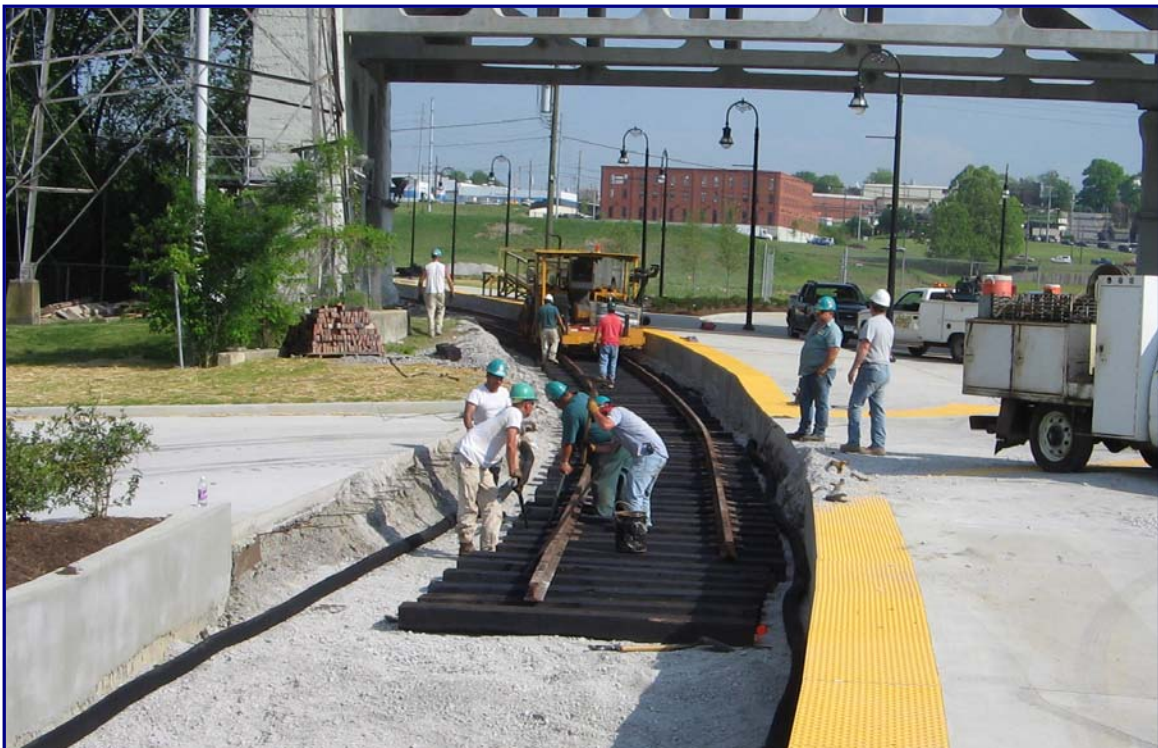
90 Day Look Ahead

- Final Surfacing will be completed
- Stansell Electric will finish installing grade crossing signals on Phase II crossings and continue installation of train signals
- Paving will commence at the other three outlying stations

Construction Pictures



April 21, 2006 – Mt. Juliet Station with Paved Parking Lot



April 17, 2006 – Track into Riverfront Station being Constructed



April 18, 2006 – Grading at Martha Station